



ARTS & CULTURE, NEWPORT COUNTY, THINGS TO DO

Irish immigrant women in domestic service topic of upcoming lecture

Dr. Margaret Lynch-Brennan and Ms. Leslie B. Jones, "The Irish Bridget: Irish Immigrant Women in Domestic Service in America, 1840-1930, With Spotlight on Irish Servants of the Newport Mansions"

by **Ryan Belmore** October 20, 2021



Shown, left to right, is Julia Lynch Sullivan (Laundress), her husband Timothy Sullivan (Assistant Gardener), and Julia's sister, Nellie Lynch (Chambermaid), who worked at The Elms. Julia was born in Cork, Ireland in 1903 and emigrated in 1923. Her older sister, Nellie, was already employed at The Elms, so after a few years in New York, Julia joined her in Newport. Julia was employed by Miss Julie Berwind for eighteen seasons at The Elms. Photo courtesy of The Preservation Society of Newport County

The Museum of Newport Irish History has announced the second talk in its 20th Annual Michael F. Crowley Lecture Series, to be presented "virtually" on Monday, October 25, 2021, at 6:00 p.m. via Zoom.

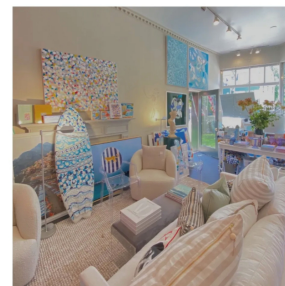
Dr. Margaret Lynch-Brennan and Ms. Leslie B. Jones will present a talk entitled, "*The Irish Bridget: Irish Immigrant Women in Domestic Service in America, 1840-1930 With Spotlight on Irish Servants of the Newport Mansions.*"



OKO
DURIS STUDIOS

401-849-1540
480 THAMES STREET

LOCAL HANDMADE JEWELRY



KRISTEN COATES
Art & Home
152 Bellevue Ave, Newport
kristencoates.net

WINE + DINE
OVERLOOKING THE VINES



Shown, left to right, is Julia Lynch Sullivan (Laundress), her husband Timothy Sullivan (Assistant Gardener), and Julia's sister, Nellie Lynch (Chambermaid), who worked at The Elms. Julia was born in Cork, Ireland in 1903 and emigrated in 1923. Her older sister, Nellie, was already employed at The Elms, so after a few years in New York, Julia joined her in Newport. Julia was employed by Miss Julie Berwind for eighteen seasons at The Elms. Photo courtesy of The Preservation Society of Newport County

Never miss a headline, subscribe to What's Up Newp's free daily newsletter today!

It's good. We promise.

No thanks

Margaret Lynch-Brennan is a public historian, educator, consultant, and author of the book *"The Irish Bridget: Irish Immigrant Women in Domestic Service in America, 1840-1930."* Leslie B. Jones is Director of Museum Affairs and Chief Curator for The Preservation Society of Newport County.

Dr. Lynch-Brennan will discuss the work and social lives of "Irish Bridgets," the young Irish immigrant girls who labored as cooks, maids and nannies in middle and upper-class homes in urban America. She will share insights from her book regarding their impact on Irish-American life, and their contribution to American ethnic, labor, and women's history. Leslie Jones will share the research the Preservation Society of Newport County has produced to spotlight the life experiences of Irish immigrant women in servitude at The Elms and other Newport Mansions.



A complete talk overview and full speaker bios may be found on the ["Lectures" page of newportirishhistory.org](#) (click "Details"), where you may reserve for this lecture and view videotapes of many past talks.

The lecture is free of charge, but reservations are required to receive the Zoom login information.

For additional information, contact Ann Arnold at newportirishhistory@gmail.com or (401) 841-5493.

To learn more about the Museum of Newport Irish History, visit www.NewportIrishHistory.org

More from What's Up Newp

[FirstWorks presenting Johnny Gandelsman's "This is America" December 5th](#)

[Volunteers turn out to clean up Butts Hill Fort](#)

[First Attested Black Mutual Aid Society in Nation Was Formed in Newport on November 10, 1780](#)

[Open-road tolling lanes on Pell Bridge will be expanded to two lanes in each direction beginning Nov. 11](#)

[Opinion: The U.S. must step up and lead](#)

[Spindle City Fest coming to Fall River Saturday, November 27](#)

[Obituary: Jacquelyn Sisson](#)

[Obituary: John Leo Deveau](#)

[Obituary: Beulah Ann Pettey](#)

[Opinion: Why Rhode Island needs municipal broadband infrastructure](#)

RESERVE TODAY!

RESERVE NOW

NEWPORT VINEYARDS TAP ROOT

OKO
DURIS STUDIOS

401-849-1540
480 THAMES STREET

LOCAL HANDMADE JEWELRY

WUN
WHAT'S UP NEWP

SOCIALIZE WITH US

FOLLOW US ON INSTAGRAM

@whatsupnewp

whatsupnewp.com

What's Up Newp Newsletter

Type your email...

#substack

ROWEN'S WHARF
THE ANCHOR OF NEWPORT

Newport's Holiday Destination

shops • eateries • events

LEARN MORE

NEWPORT RESTAURANT WEEK

Nov. 5-14 all deals on the table!

NewportRestaurantWeek.org

TAGGED: [Newport](#) [Newport County](#)



RYAN BELMORE



Ryan Belmore has been the Owner & Publisher of What's Up Newp since 2012. He also currently works for Mountain News, where he serves as Senior Editor - North America for OnTheSnow. He previously worked for the New England Patriots and American Cancer Society. He currently serves as Vice President of Fort Adams Trust and is a member of Local Independent Online News (LION) Publishers and North American Snowsports Journalists Association (NASJA).

More by Ryan Belmore

Outdoor Courtyard Seating - Open at 8 a.m. - Closed Tuesday
Coffee, Espresso, Breakfast Sandwiches, Cafe Lunch Menu
469 Thames St on Spring Wharf, Newport • (401) 619-1530

Now is the Time
Peoples CREDIT UNION

Art makes your home beautiful.
Custom Sized photographic works
by Alexander Nesbitt available at Blink Gallery
WE'VE MOVED! NOW AT 89 THAMES STREET



Your source for what's up in Newport County, Rhode Island, and beyond. Est. 2012

What's Up Newp
Best Local News Blog in Rhode Island
Rhode Island Monthly's 2018, 2019, & 2020 Readers' Poll

What's Up Newp, LLC
Mail: 270 Bellevue Avenue #184 Newport, RI 02840
Phone: 1-401-662-1653
ryan@whatsupnewp.com

Proud member of



Your dream home awaits.
30-Year Fixed Rate Mortgage
Low Rates. Local Expertise. Local Decision-Making.

You belong here

Apply Today



X